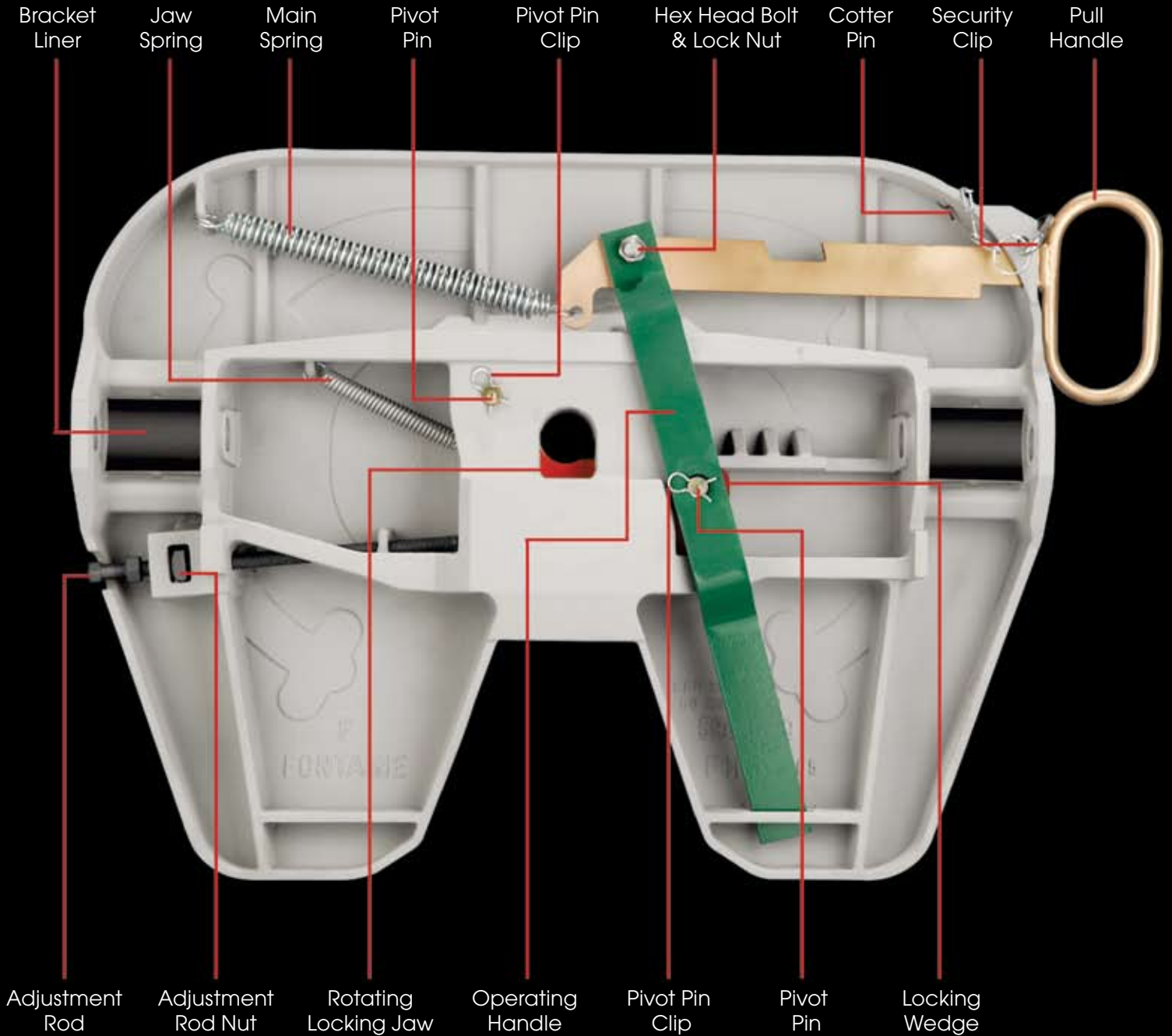


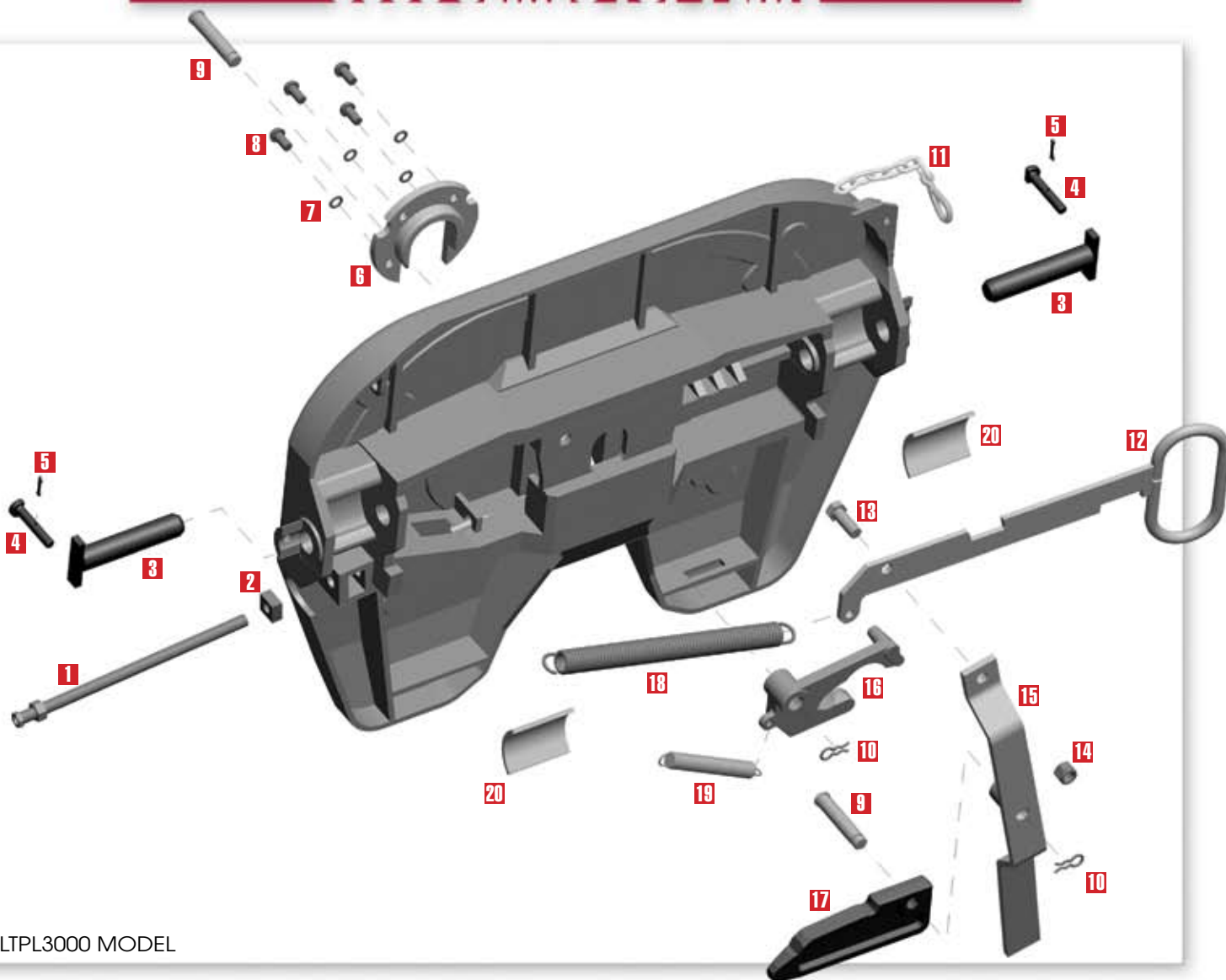
3000 Series Top Plate



SLTPL3000 Model



3000 SERIES TOP PLATE



SLTPL3000 MODEL

| Item | Description | Part No. | (Quantity) | Item | Description | Part No. | (Quantity) |
|------|--|----------|------------|------|---------------------------|-----------|------------|
| 1 | Adjustment Rod | * | (1) | 11 | Security Clip | CLIP-3000 | (1) |
| 2 | Adjustment Rod Nut, M16 Square | * | (1) | 12 | Pull Handle | * | (1) |
| 3 | Bracket Pin | PIN-3000 | (2) | 13 | Hex Head Bolt, M16 X 45MM | * | (1) |
| 4 | Bracket Retainer Pin | PIN-124P | (2) | 14 | Lock Nut, M16 | * | (1) |
| 5 | Cotter Pin | PIN-165* | (2) | 15 | Operating Handle | * | (1) |
| 6 | Wear Ring | * | (1) | 16 | Rotating Locking Jaw | * | (1) |
| 7 | Flat Washer, M12 | * | (4) | 17 | Locking Wedge | * | (1) |
| 8 | Hex Socket Button Head Screw, M12X25MM | * | (4) | 18 | Main Spring | * | (1) |
| 9 | Pivot Pin | * | (2) | 19 | Jaw Spring | * | (1) |
| 10 | Pivot Pin Clip | * | (2) | 20 | Bracket Liners | LNR-3000 | (2) |

Order part BSH-3000 for a set of two Bracket Bushings (not pictured).

* Indicates the part is available in a repair kit. See Fontaine Schematic Catalog or Fontaine Parts List for details.



www.fifthwheel.com